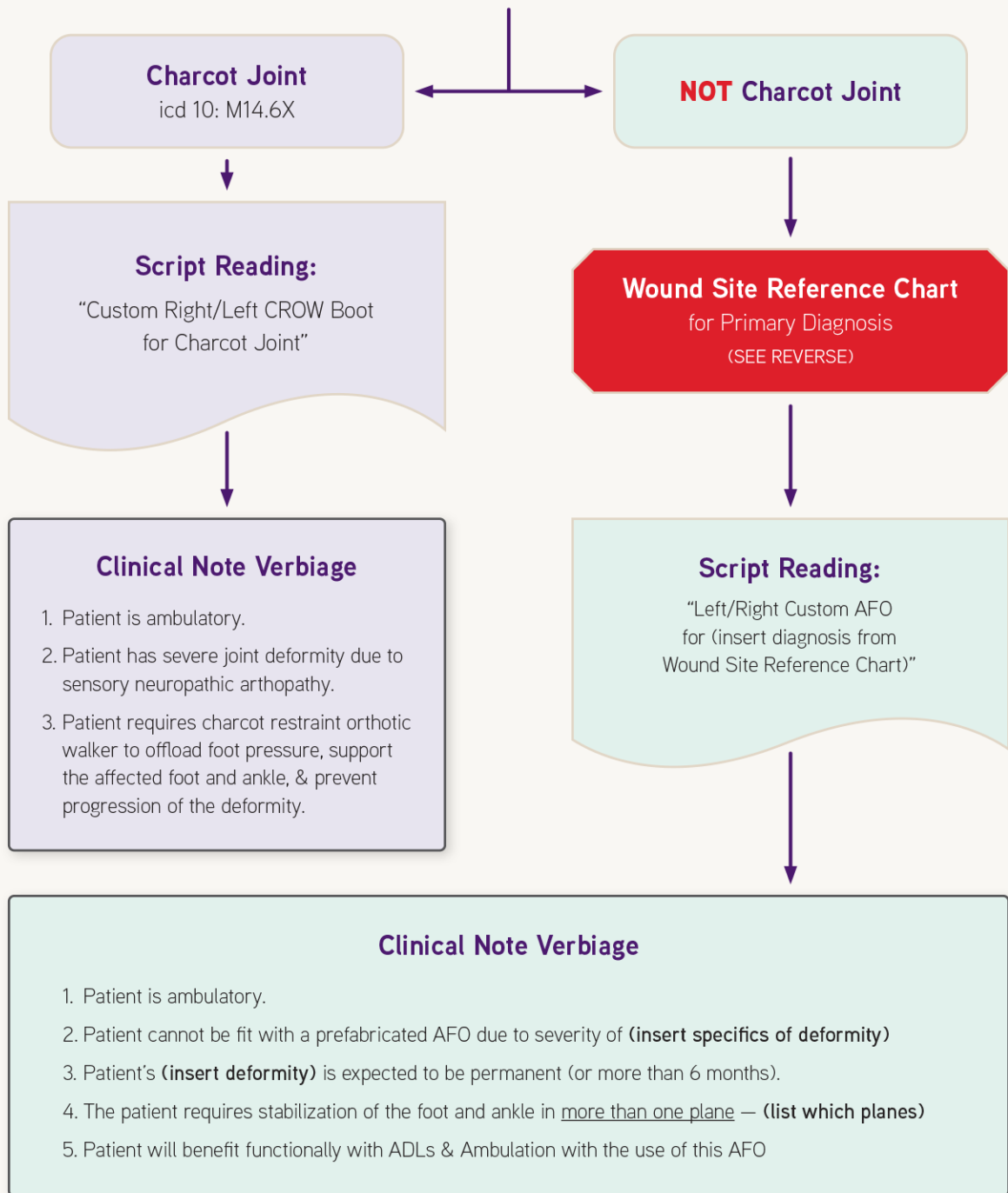




OWLS

ORTHOMERICA WHOLE LIMB SOLUTIONS

PATIENT NEEDS OFFLOADING OF WOUND SITE



Special thanks to Katie Richmond MSPO, CPO for creating this chart.

Fax script,
demographics &
clinical notes



Example O&P

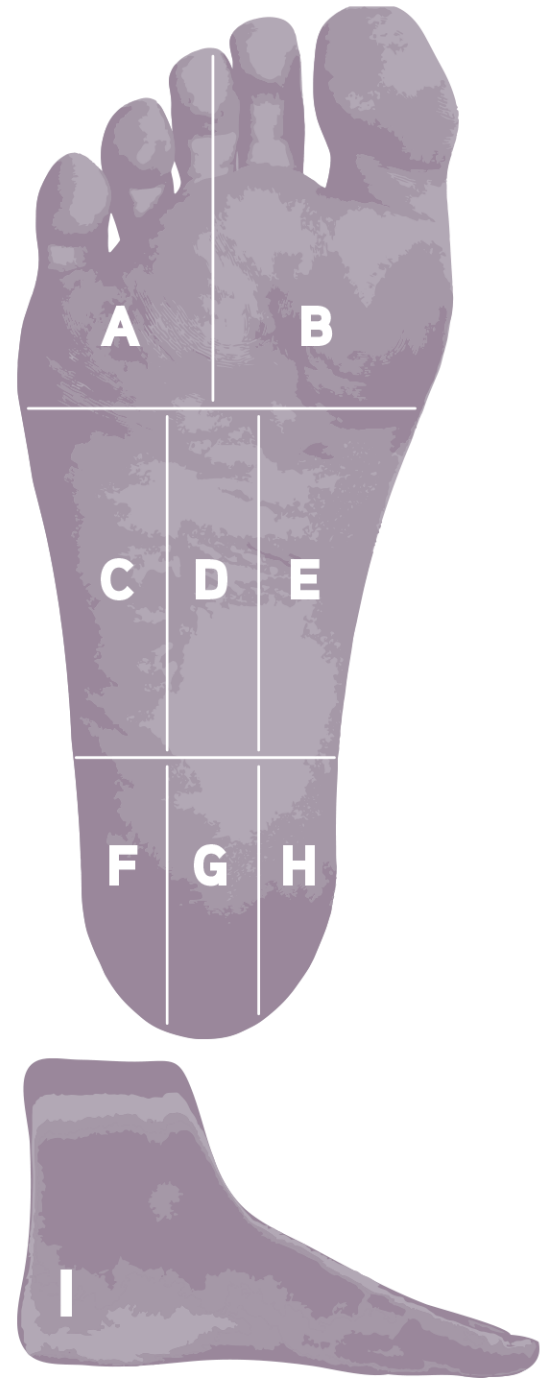
1 (800) 555-1213
info@example.com

Fax:
1 (800) 555-1212

Wound Site ICD-10 Reference Chart



	Possible Diagnosis	ICD-10*
A	Lateral side of forefoot between 3rd–5th metatarsals and distal toes	
	Equino-varus deformity	M21.549
	Forefoot inversion	M21.6X9
	Forefoot adduction	M21.6X9
	Achilles tendon contracture	M24.573
	Dropfoot deformity	M21.6X9
B	Medial side of forefoot 1st–3rd metatarsals and distal toes	
	Posterior tibial tendon dysfunction	M76.829
	Ankle valgus deformity	M21.6X9
	Severe pes planus	Q66.50
	Equino-valgus deformity	M21.6X9
	Achilles tendon contracture	M24.573
C	Lateral side of midfoot	
	Equino-Varus Deformity	M21.549
	Forefoot Inversion	M21.6X9
	Forefoot Adduction	M21.6X9
	Ankle Instability	M21.6X9
D	Midline region of midfoot	
	Charcot foot deformity	M14.60
	Posterior tibial tendon dysfunction	M76.829
	Severe pes planus	Q66.50
	Arthropathy associated with neurological disorders	M14.60
E	Medial side of midfoot	
	Posterior tibial tendon dysfunction	M76.829
	Charcot foot deformity	M14.60
	Severe pes planus	Q66.50
F	Lateral side of heel between posterior heel and cuboid	
	Ankle varus deformity	M21.6X9
	Ankle instability	M21.6X9
	Forefoot adduction	M21.6X9
	Dropfoot deformity	M21.6X9
G	Midline region of heel between posterior heel and cuneiforms	
	Dropfoot deformity	M21.6X9
	Cavus foot	M21.6X9
	Posterior tibial tendon dysfunction	M76.829
H	Medial side of heel between posterior heel and navicular	
	Ankle varus deformity	M21.6X9
	Ankle instability	M21.6X9
	Forefoot adduction	M21.6X9
	Dropfoot deformity	M21.6X9
I	Posterior side of heel	
	Dropfoot deformity	M21.6X9
	Cavus foot	M21.6X9
	Posterior tibial tendon dysfunction	M76.829



*Diagnosis code sets are recommended guidelines only. It is the responsibility of the dispensing clinician to determine appropriate medical diagnoses based on established practices, laws, and Medicare/Medicaid regulations.